



2276 Research Drive

Livermore CA 94550

925 443 6300



**MOD LEAF SPRING KIT**

**1964 - 1973 FORD MUSTANG**

# INSTALLATION INSTRUCTIONS

## BEFORE STARTING

Read all installation instructions to their fullest before beginning the installation of your product. Always make sure to wear the appropriate safety equipment when working on your vehicle and that the car is safely placed on jack stands. If any questions arise before/during/after you install the product please call MMI at 925-443-6300 or email us at [maier@mikemaierinc.com](mailto:maier@mikemaierinc.com).

**NOTE: All work should be performed by a qualified technician.**

**LEGAL DISCLAIMER:** Mike Maier Inc. is not liable for personal, property, legal, or financial damages from the use or misuse of any product we sell. The purchaser is solely responsible for the safety and performance of these products. No warranty is expressed or implied.

## INCLUDED IN THIS KIT



| ITEM NO. | DESCRIPTION          | QTY. |
|----------|----------------------|------|
| 1        | Mustang leaf springs | 2    |

## TOOLS

- Standard socket set
- Torque wrench

## A. JACK UP THE VEHICLE

To replace the leaf spring plates, the vehicle needs to be jacked up with the rear jack stands supporting the car at the frame rails in front of the leaf spring eye bolts. This will give you clearance to do the installation.

## B. REMOVE THE LEAF SPRING PLATES

1. Remove shock hardware and disconnect the shocks from leaf spring plates, let the shocks hang.
2. Unbolt the U-bolts and remove the leaf spring plates.

## C. REMOVE THE EXISTING SPRINGS

1. The next step is to jack up the rear end slightly so there is no load on the leaf springs.
2. Remove the leaf spring shackle assembly so that the rear of the spring drops to the floor.
3. Remove the hardware for the front eyebolt of the leaf spring. Once that is out the leaf spring can be removed.

## D. INSTALL YOUR NEW MOD SPRINGS

1. Apply grease to the eyelet bushings and collars and insert them into the front leaf spring eyelets. The collars may need some persuasion with a dead blow hammer or mallet.



Figure D.1.1 – Applying grease to eyelet bushings and collar

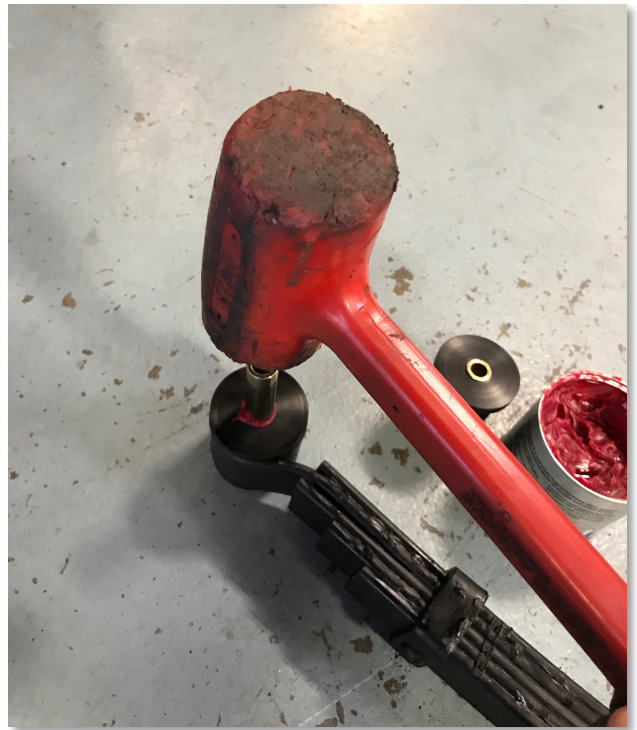


Figure D.1.2 – Use a dead blow hammer to press the collar into the bushing



Figure D.1.3 – A view of the completed installation of the front eyelet bushings.



2. Next, we will begin to install the leaf spring shackles. Grease two rear shackle bushing halves and slide them onto the shackle bolts. Take those halves and slide them through the rear eyelets on the car. Note that on each side the bolts are facing inward towards the fuel tank.



*Figure D.2 – Here the leaf spring is about to be lifted onto the shackle assembly. Note the orientation of the shackle bolts.*

3. Now hang the rear leaf spring eyelets from the shackles. It's a good idea to start with the rears because they require some lateral movement of the spring. This can be difficult when the fronts are already bolted in.
4. Apply grease to the remaining rear shackle bushings and press them into the rear eyelets.
5. Install the inner shackle plates and hang tighten the hardware. Be sure to clean off any grease from the bolt threads.



*Figure D.5 – Here the remaining shackle plates are being installed.*

6. Lift up the front of the leaf springs and line them up with their respective bolt holes on the chassis. Slide the front eyelet bolts through and install the hardware.

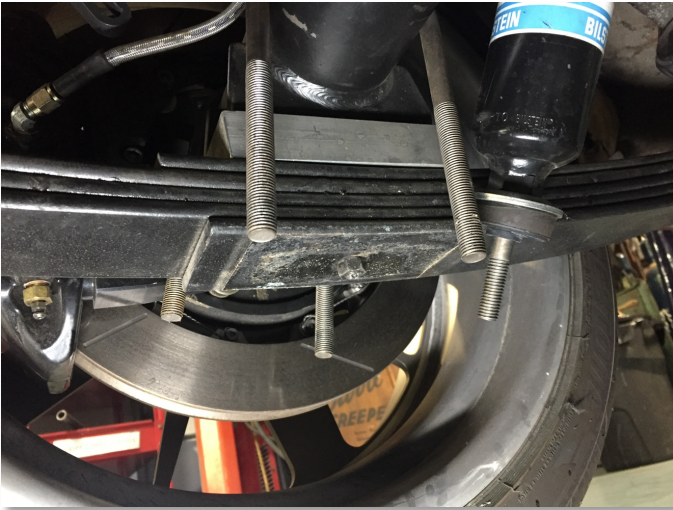
#### E. LOWER REAR END

Lower the rear end onto the leaf springs and be sure to line up the leaf spring center bolts with their holes on the perches

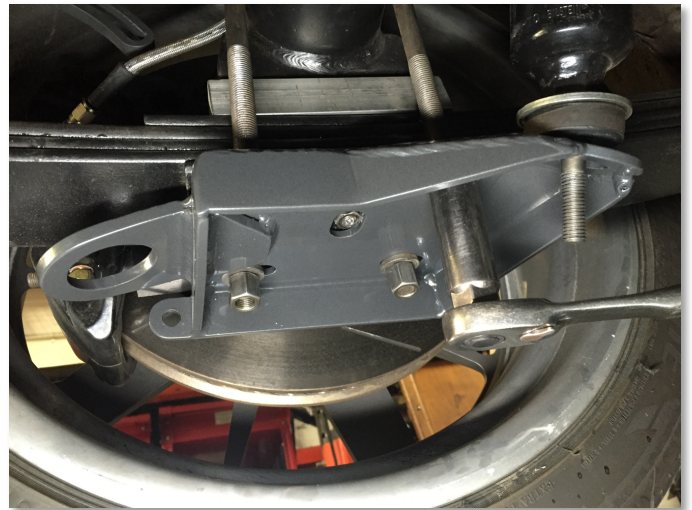
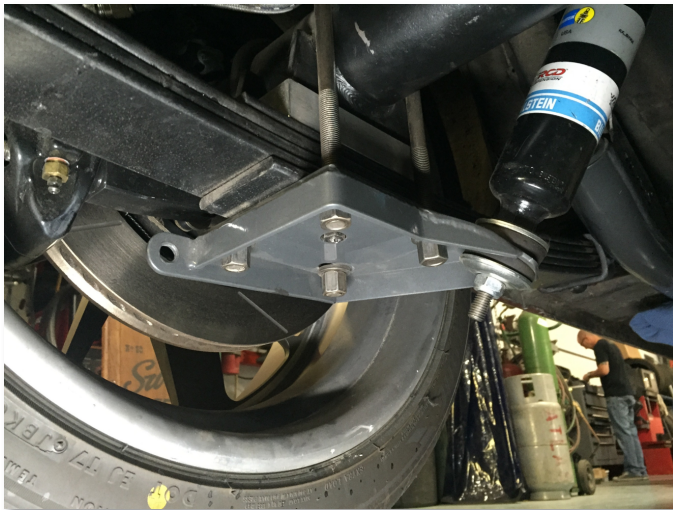


## F. INSTALL LEAF SPRING PLATES

1. Line up each plate with the U-bolts and get the lock nuts started by hand.



2. Install the upper washers and bushings to the lower ends of the shock absorbers. Connect the lower ends of the shock absorbers to the leaf spring plates.



3. Install the upper washers and bushings to the lower ends of the shock absorbers. Connect the lower ends of the shock absorbers to the leaf spring plates.
4. Install the lower bushings and washers to the shock absorbers and get the nyloc nuts started by hand.
5. Using a socket wrench, tighten the shock absorber nuts until the grommets are just starting to bulge.



## G. TORQUE TO SPEC

The final step is to go through and tighten all hardware to spec.