



2276 Research Drive

Livermore CA 94550

925 443 6300

MOD LEAF SPRING PLATES

1964 - 1973 FORD MUSTANG

INSTALLATION INSTRUCTIONS

BEFORE STARTING

Read all installation instructions to their fullest before beginning the installation of your product. Always make sure to wear the appropriate safety equipment when working on your vehicle and that the car is safely placed on jack stands. If any questions arise before/during/after you install the product please call MMI at 925-443-6300 or email us at maier@mikemaierinc.com.

NOTE: All work should be performed by a qualified technician.

LEGAL DISCLAIMER: Mike Maier Inc. is not liable for personal, property, legal, or financial damages from the use or misuse of any product we sell. The purchaser is solely responsible for the safety and performance of these products. No warranty is expressed or implied.

INCLUDED IN THIS KIT



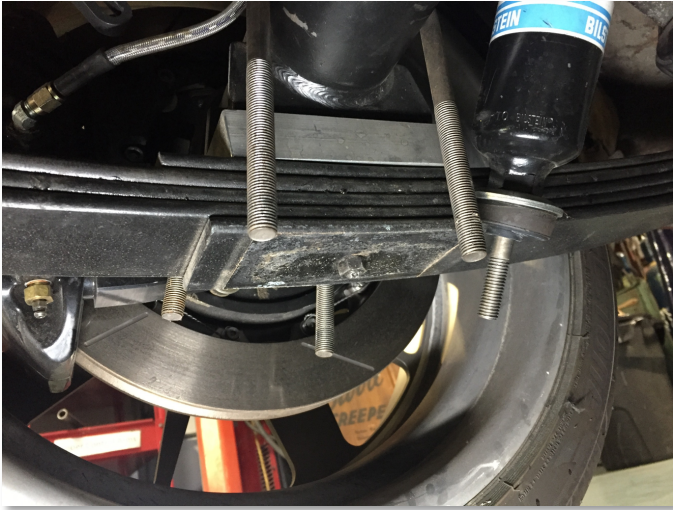
ITEM NO.	DESCRIPTION	QTY.
1	Driver Side Leaf Spring Plate	1
2	Passenger Side Leaf Spring Plate	1

TOOLS

- Standard socket set
- Torque wrench

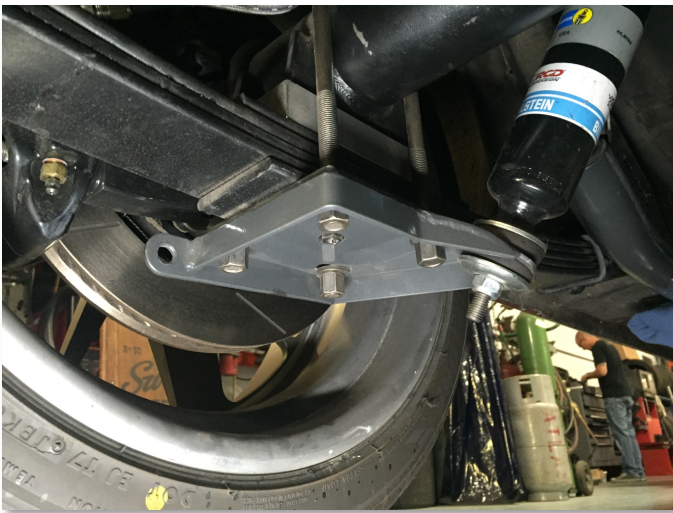
A. PREPARE FOR INSTALLATION

To install the MOD leaf spring plates, the vehicle needs to be jacked up with the axle housing resting on the leaf springs. The U-bolts should be hanging on either side of the leaf spring as shown.



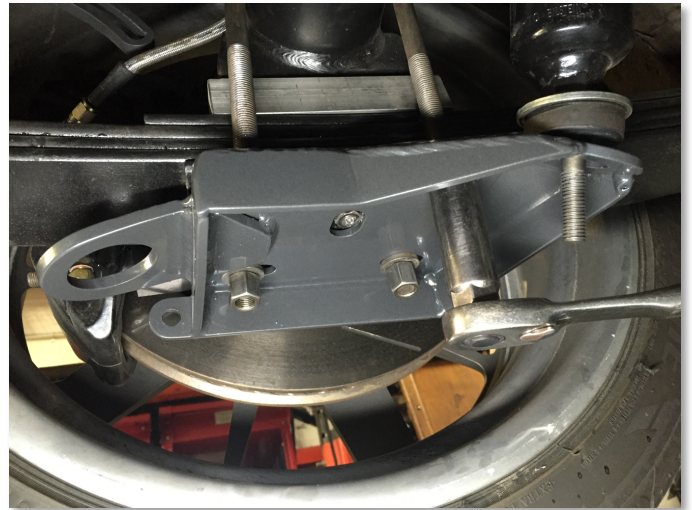
B. INSTALL LEAF SPRING PLATES

1. Line up each plate with the U-bolts and get the lock nuts started by hand.
2. Install the upper washers and bushings to the lower ends of the shock absorbers. Connect the lower ends of the shock absorbers to the leaf spring plates.



C. TORQUE TO SPEC

1. Torque U-bolt lock nuts to spec – 30-45 ft-lbs.



2. Install the upper washers and bushings to the lower ends of the shock absorbers. Connect the lower ends of the shock absorbers to the leaf spring plates.
3. Install the lower bushings and washers to the shock absorbers and get the nyloc nuts started by hand.
4. Using a socket wrench, tighten the shock absorber nuts until the grommets are just starting to bulge.

